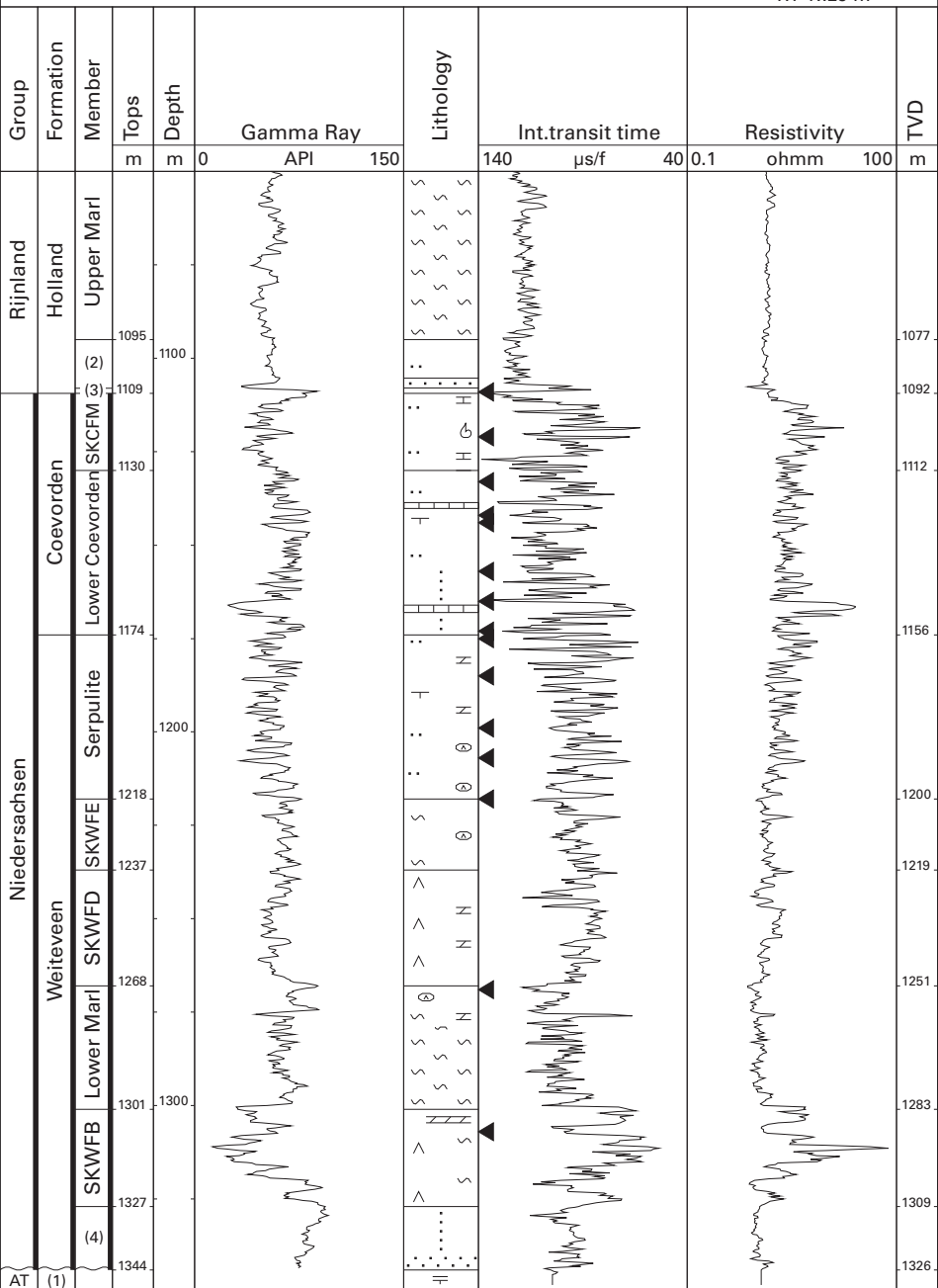


De Bente-1 (NAM)

52°41'37.80" N
06°46'15.67" E
RT 17.29 m



AT	Altena Gr.	SKWFE	Weiteveen Upper Marl Mb.
(1)	Aalborg Fm.	SKWFD	Weiteveen Upper Evaporit Mb.
(2)	Middle Holland Claystone Mb.	SKWFB	Weiteveen Lower Evaporite Mb.
(3)	Lower Holland Marl Mb.	(4)	Weiteveen Basal Clastic Mb.
SKCFM	Middle Coevorden Mb.		