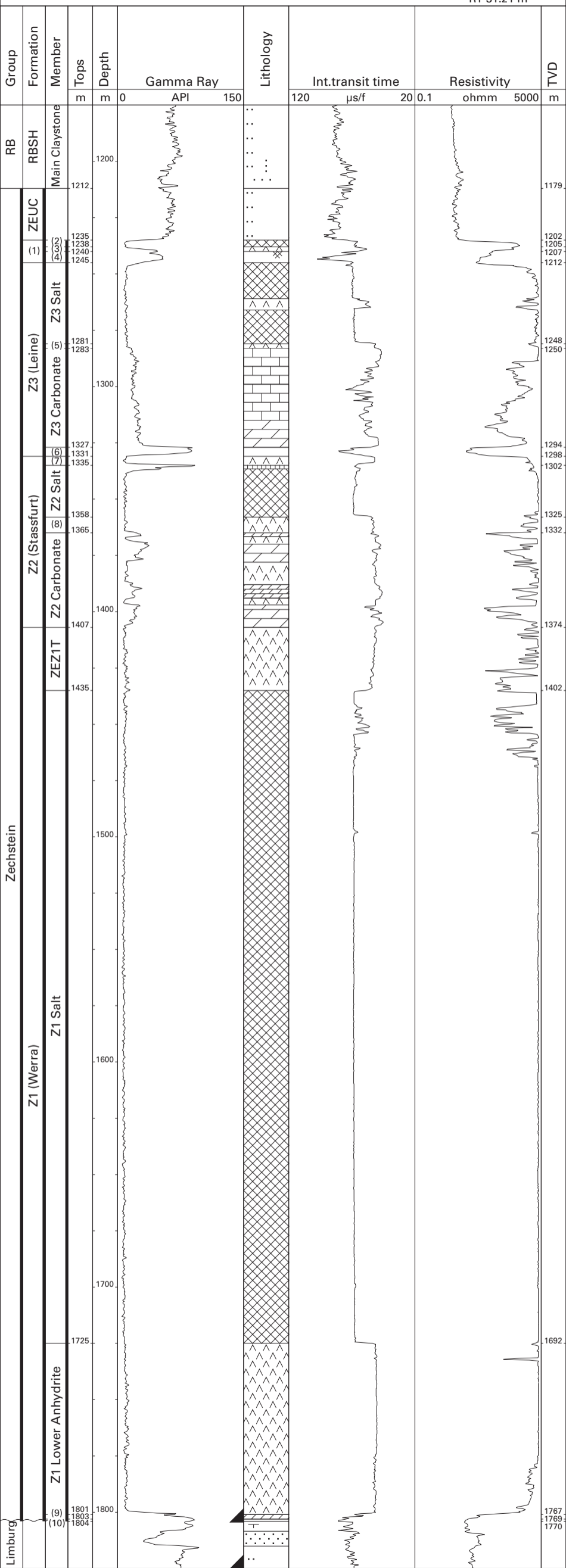


Rossum-Weerselo-3 (NAM)

52°21'03.51" N
06°54'38.18" E
RT 31.21 m



- | | | | |
|------|-------------------------------|-------|------------------------|
| RB | Lower Germanic Trias Gr. | (5) | Z3 Main Anhydrite Mb. |
| RBSH | Lower Buntsandstein Fm. | (6) | Grey Salt Clay Mb. |
| ZEUC | Zechstein Upper Claystone Fm. | (7) | Z2 Roof Anhydrite Mb. |
| (1) | Z4 (Aller) Fm. | (8) | Z2 Basal Anhydrite Mb. |
| (2) | Z4 Salt Mb. | ZE21T | Z1 Upper Anhydrite Mb. |
| (3) | Z4 Pegmatite Anhydrite Mb. | (9) | Z1 Carbonate Mb. |
| (4) | Red Salt Clay Mb. | (10) | Coppershale Mb. |