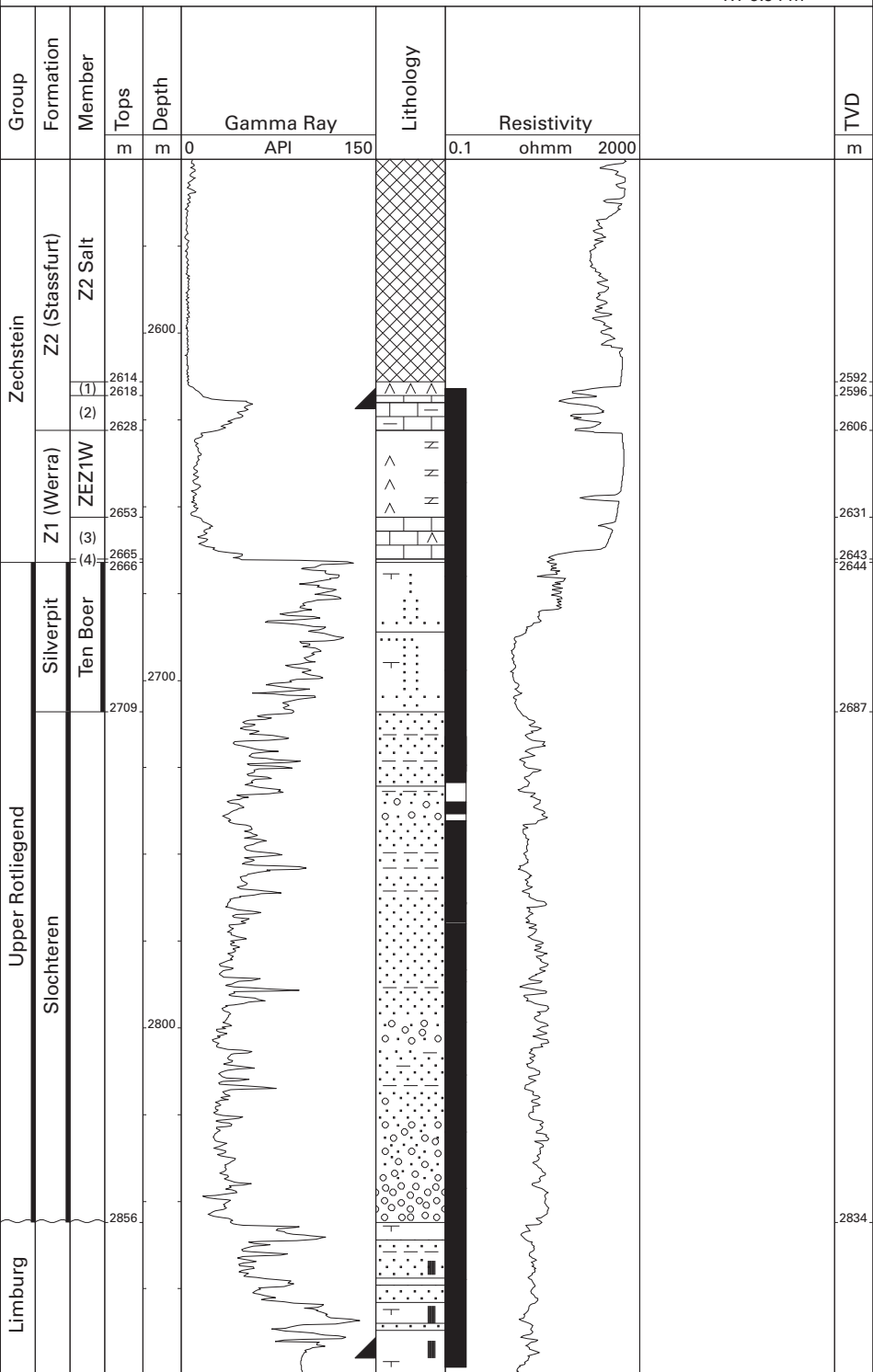


Slochteren-4 (NAM)

53°11'33.20" N
06°45'14.89" E
RT 5.94 m



(1) Z2 Basal Anhydrite Mb.

(2) Z2 Carbonate Mb.

ZEZ1W Z1 Anhydrite Mb.

(3) Z1 Carbonate Mb.

(4) Coppershale Mb.