

wintershall
Well: E18-04
PLATE 1

cm TOP OF CORE 1
0
5
10
15
20
25
30
35
40
45
50
55
60
65
70
75
80
85
90
95
100

cm
0
5
10
15
20
25
30
35
40
45
50
55
60
65
70
75
80
85
90
95
100

4200.50 m. Wintershall Noordzee E18-4
Core 1
Box 6
Fluid 6
4201.40 m.

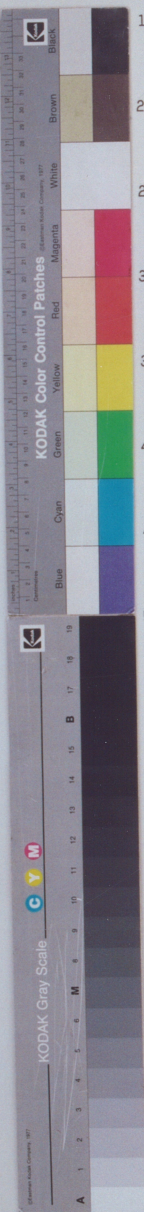
4199.60 m. Wintershall Noordzee E18-4
Core 1
Box 5
Fluid 5
4200.50 m.

4198.70 m. Wintershall Noordzee E18-4
Core 1
Box 4
Fluid 4
Preserved Sample 2
4198.70 m.*

4197.80 m. Wintershall Noordzee E18-4
Core 1
Box 3
Fluid 3
4197.80 m.

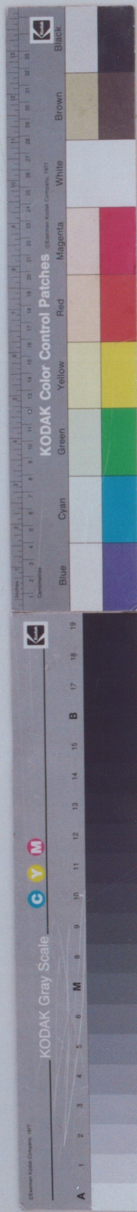
4196.90 m. Wintershall Noordzee E18-4
Core 1
Box 2
Fluid 2
4196.90 m.

4196.00 m. Wintershall Noordzee E18-4
Core 1
Box 1
Fluid 1
Preserved Sample 1
4196.90 m.



Well: E18-04
PLATE 2

0
5
10
15
20
25
30
35
40
45
50
55
60
65
70
75
80
85
90
95
100



4205.53 m. Wintershall Noordzee E18-4

Fluid 12

40B 40C 40 40A 41 41V 42

Core 1 Box 12

4205.43 m.

4204.63 m. Wintershall Noordzee E18-4

Fluid 11

36 37 37V 38 39V 39

Core 1 Box 11

4204.63 m.

4203.80 m. Wintershall Noordzee E18-4

Fluid 10

33V 33 33A 33B 33C 34 34V 34B 35 35V 35A

Core 1 Box 10

4203.80 m.

4203.20 m. Wintershall Noordzee E18-4

Fluid 9

30 31V 31 31A 31V 31 32 32V 32

Core 1 Box 9

4203.20 m.

4202.30 m. Wintershall Noordzee E18-4

Fluid 8

27 27V 27 28 28V 28 29V 29

Core 1 Box 8

4202.30 m.

4201.40 m. Wintershall Noordzee E18-4

Fluid 7

23 23V 23A 23B 24 24V 24 25V 25 26

Core 1 Box 7

4201.40 m.