

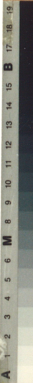
CORE-1 F03-FB-101 1
3206.00 3206.35 3207.25 3208.14

METRE
0
5
10
15
20
25
30
35
40
45
50
55
60
65
70
75
80
85
90
95
100



WAXED SAMPLE
from 3206.95 to 3207.25

WAXED SAMPLE
from 3208.74 to 3209.04



F03-FB-101



168117007

CORE-1

F03-FB-101

2

3209.04

3209.95

3210.85

3211.76

METRE

0

5

10

15

20

25

30

35

40

45

50

55

60

65

70

75

80

85

90

95

100

WAXED SAMPLE
From 3209.95 to 3210.25

9

14

17

92

94

10

12

15

18

93

11

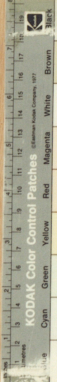
13

16

19

81

82



CORE-1

F03-FB-101

3

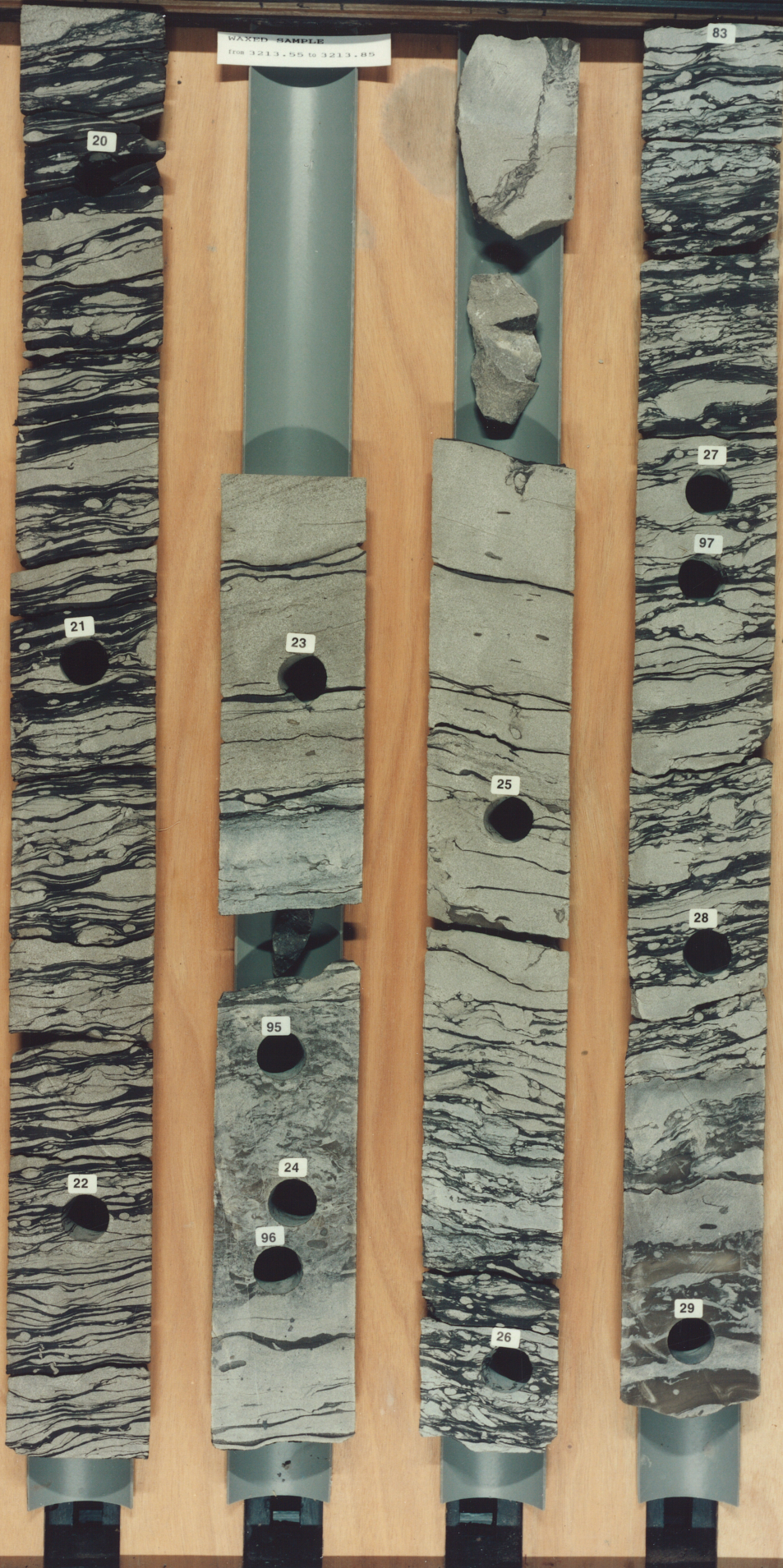
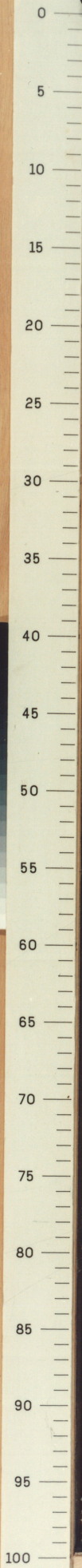
3212.65

3213.55

3214.45

3215.35

METRE



CORE-1

F03-FB-101

4

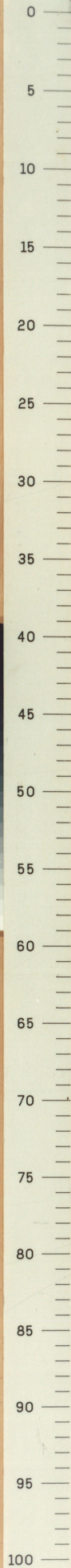
3216.24

3217.14

3218.04

3218.94

METRE



WAXED SAMPLE
from 3217.14 to 3217.44

38

30

36

33

39

31

84

37

99

34

WAXED SAMPLE
from 3218.04 to 3218.94

40

98

35

32



CORE-1

F03-FB-101

5

3219.84

3220.75

3221.65

3222.55

METRE

0

5

10

15

20

25

30

35

40

45

50

55

60

65

70

75

80

85

90

95

100

41

44

102

42

100

45

47

103

49

50

104

48

51

43

46

101

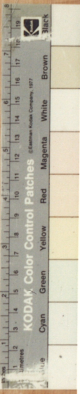
85

SAMPLE SEND TO CORES
3222.55 - 3222.70

SAMPLE USED FOR
TRIAXIAL PERMEABILITY
3221.02 - 3221.14

WAXED SAMPLE
from 3222.25 to 3222.55

SAMPLE USED FOR
TRIAXIAL PERMEABILITY
3220.55 - 3220.67



CORE-1

F03-FB-101

6

3223.27

3223.70

3224.60

3225.51

METRE
0
5
10
15
20
25
30
35
40
45
50
55
60
65
70
75
80
85
90
95
100



52

105



53

106

54

SAMPLE SEND TO COREX
from 3224.60 to 3224.75



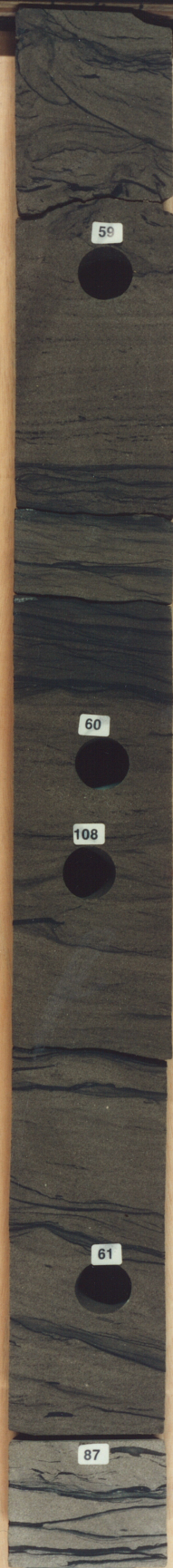
57

107



58

86



59

60

108

61

87

sample used for
TRIAXIAL PERMEABILITY
3224.10 - 3224.14



55



CORE-1

F03-FB-101

7

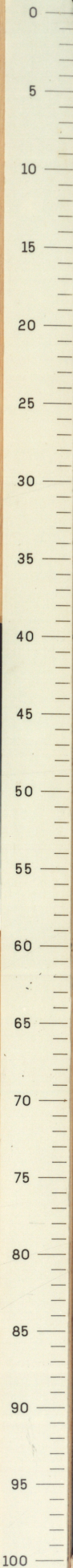
3226.41

3227.31

3228.21

3229.10

METRE



WAXED SAMPLE
from 3227.01 to 3227.31



CORE-1

F03-FB-101

8

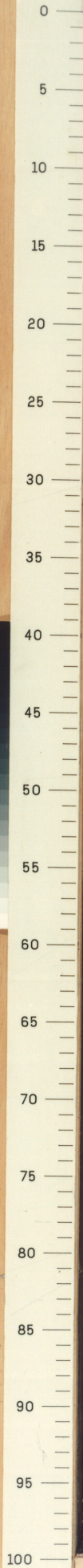
3230.00

3230.90

3231.80

3232.70

METRE



73

74

WAXED SAMPLE
From 3230.60 to 3230.90



89

75

76

77



78

90

