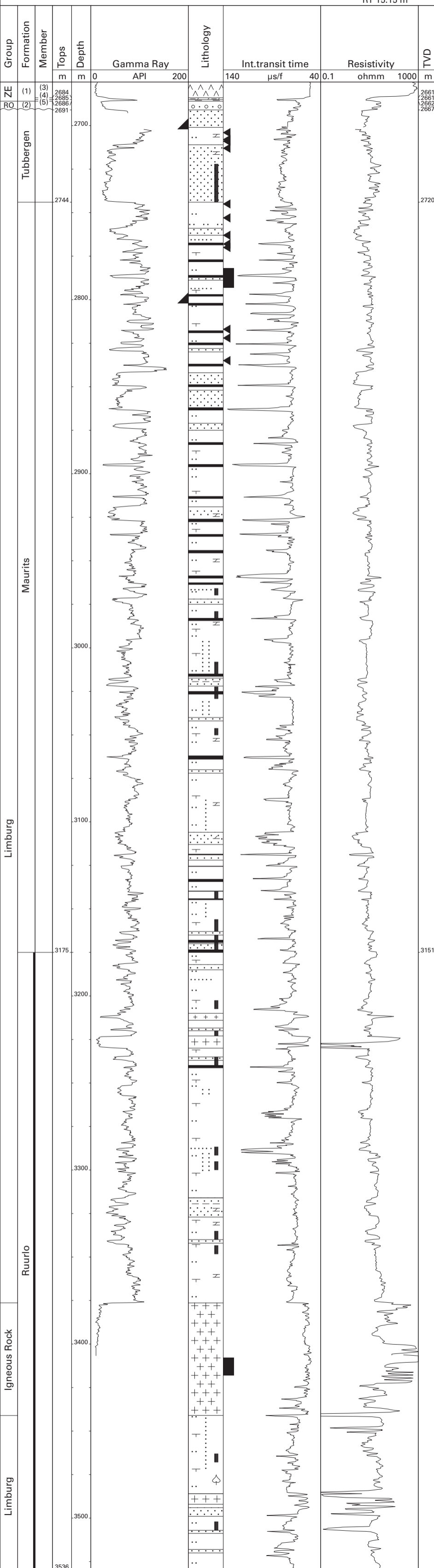


Hardenberg-2 (NAM)

52°36'53.80" N
06°34'26.12" E
RT 15.15 m



ZE Zechstein Group (3) Z1 Anhydrite Member
 RO Upper Rotliegend Group (4) Z1 Carbonate Member
 (1) Z1 (Werra) Formation (5) Coppershale Member
 (2) Slochteren Formation