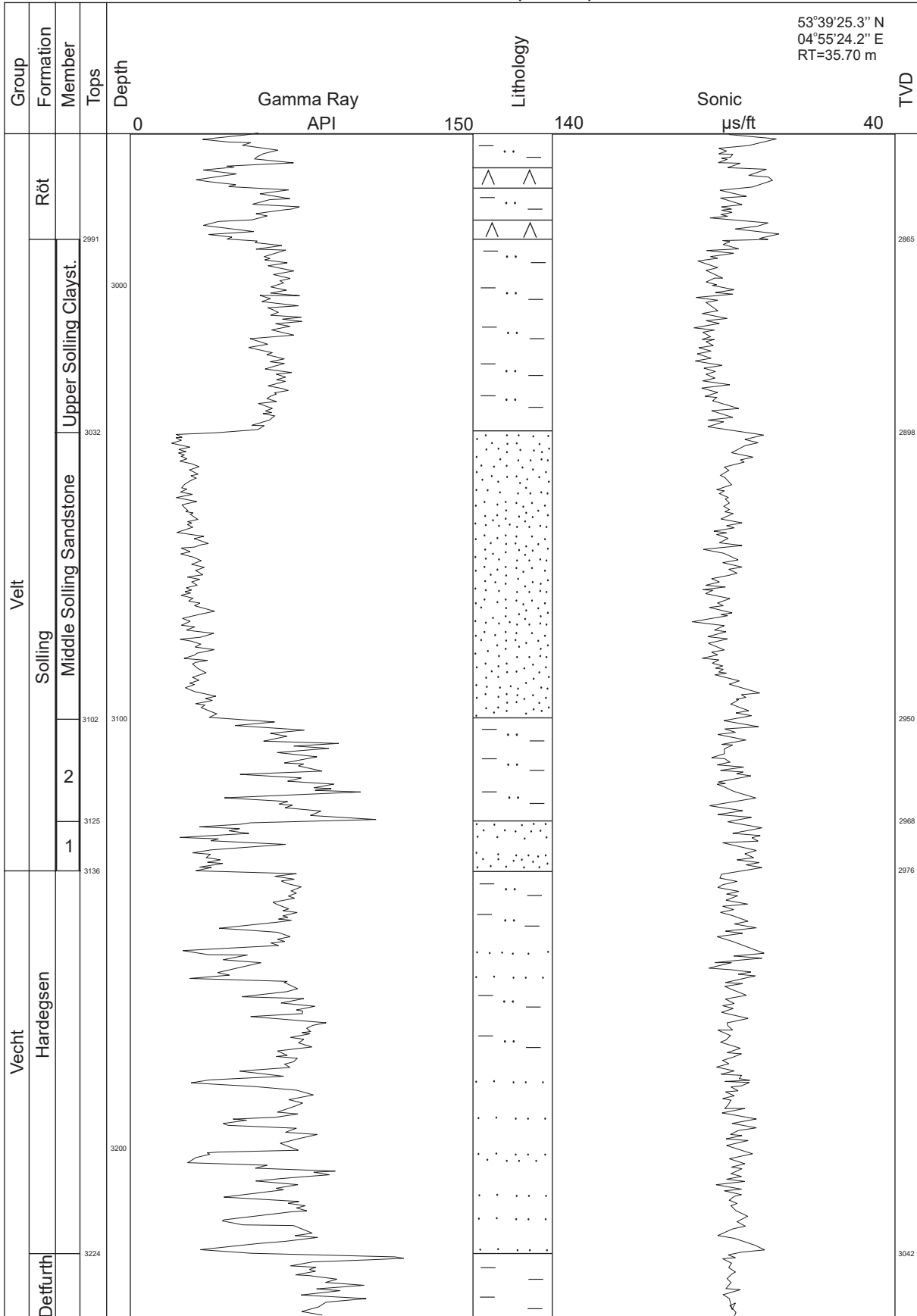


L09-07 (NAM)

53°39'25.3" N
04°55'24.2" E
RT=35.70 m



1. Basal Solling Sandstone Mb
2. Lower Solling Claystone Mb

Annex E-6 from: Geluk, M.C. 2005. Stratigraphy and tectonics of Permo-Triassic basins in the Netherlands and surrounding areas. Utrecht University, Utrecht, PhD thesis, 171 p.