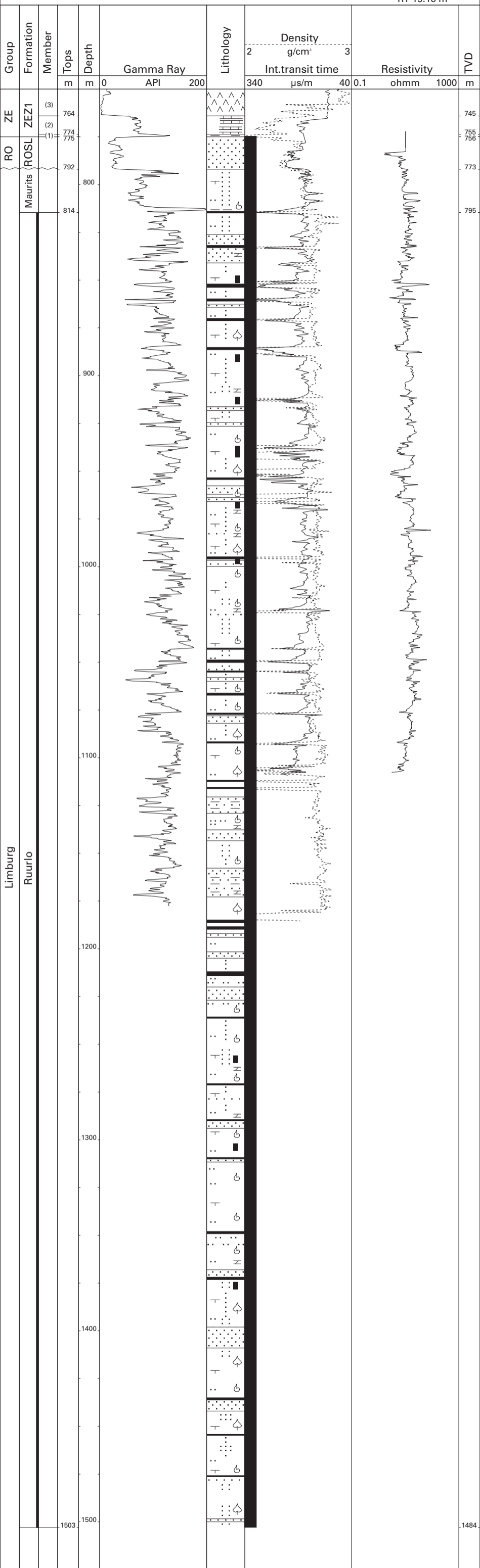


Ruurlo-1 (RGD)

52°05'22.10" N
06°29'11.54" E
RT 19.16 m



ZE	Zechstein Group	(3)	Z1 Anhydrite Member
RO	Upper Rotliegend Group	(2)	Z1 (Fringe) Carbonate Member
ZE1	Z1 (Werra) Formation	(1)	Coppershale Member
ROSL	Slochteren Formation		