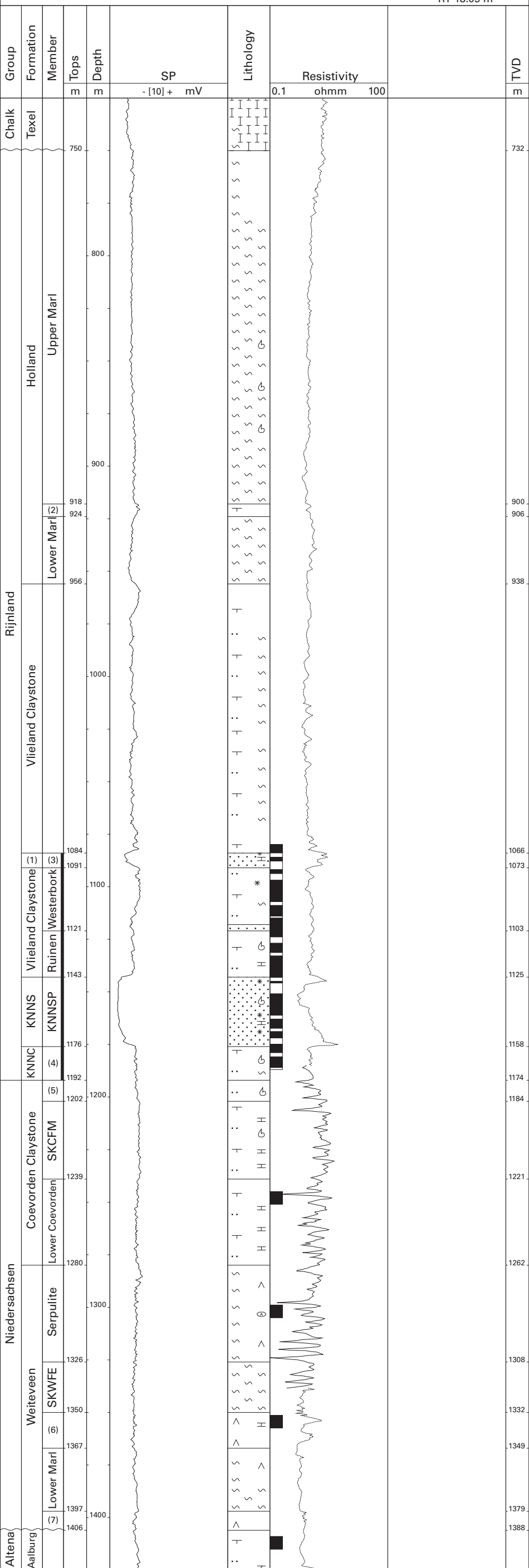


Westerbork-1 (NAM)

52°46'08.00" N
06°36'54.10" E
RT 18.09 m



- | | | | |
|-------|------------------------|-------|-------------------------------|
| (1) | Vlieland Sandstone Fm. | (2) | Middle Holland Claystone Mb. |
| KNNS | Vlieland Sandstone Fm. | (3) | Gildehaus Sandstone Mb. |
| KNNC | Vlieland Claystone Fm. | KNNSP | Bentheim Sandstone Mb. |
| (4) | Bentheim Claystone Mb. | SKWFE | Weiteveen Upper Marl Mb. |
| (5) | Upper Coevorden Mb. | (6) | Weiteveen Upper Evaporite Mb. |
| SKCFM | Middle Coevorden Mb. | (7) | Weiteveen Lower Evaporite Mb. |